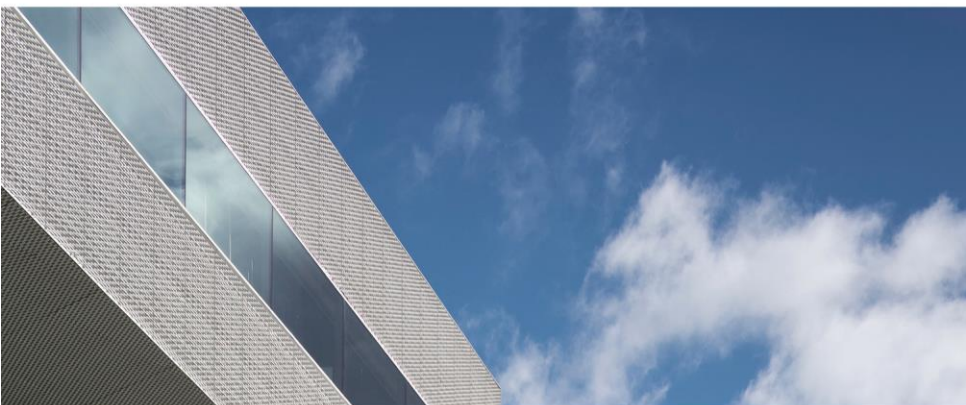


Datasheet Polyplus All Seasons 39



DESCRIPTION

Polyplus All Seasons 39 is a solar control and warmth reflective insulating glass, composed out of a clear outer pane provided with a metallic reflective coating applied using magnetic sputtering vacuum deposition technology, and a clear inner pane. The two glasses are bonded together by means of a galvanised steel spacer, filled with desiccants, and dual sealed with polyisobutylene and two-component polysulphide sealant.

COMPOSITION

Outer pane	:	Clear solar control and warmth reflecting floatglas, thickness 6mm
Cavity	:	15mm Argon filled
Inner pane	:	Clear float glass, thickness 4mm

GLAZING CHARACTERISTICS

Color in reflection	:	Neutral blue
Coating position	:	#2
Light transmission	(τ_v)	: 70 %
Light reflection outside	(ρ_v)	: 11 %
Solar Energy direct transmission	(τ_e)	: 37 %
Solar Energy Extern. Reflection	(ρ_e)	: 38 %
Energetic absorption	(ae)	: 25 %
g-value	(g)	: 39 %
Shading coefficient	(SC)	: 0,45
Heat transfer 90°	(U_g)	: 1.0 W/m ² K

TECHNICAL NOTE

Polyplus All Seasons 39 has a heat absorption of < 50 %, which means that under normal circumstances no thermal reinforcement of the glass is needed. However, it is advisable to perform an analysis if sun protection is added, as the position of this can have important consequences. The glass-thickness needs to be adapted to the glass-surface and the pressure(s) expected to act onto the glass, in line with local standards and regulations.

Instructions on fitting and quality-checks according to NBN S23-002 are applicable. Spectro-photometric data are calculated according to EN 410 (tolerance ± 3 points), the U_g is calculated to EN 673 (tolerance $\pm 0,1$ W/m²K). Insulating glass is CE-marked and certified by BENOR (BB-414-125-1279-01).

